

IMMUNOFLUORESCENCE

Infectious Diseases	Feline	FHV-Ab / FPV-Ab / FCV-Ab FPV-Ag FCoV-Ag FeLV-Ag FCV / FHV-Ag FIV-Ab
	Canine	CPV-Ab / CDV-Ab / CAV-Ab CCV-Ag CDV-Ag CPV-Ag
	Feline/Canine	HP-Ag
Inflammation	Feline	fSAA
	Canine	cCRP
Cardiac	Feline	fNT-proBNP
	Canine	cNT-proBNP
Pancreatic	Feline	fPL
	Canine	cPL
Renal	Feline	fCys-C
	Canine	cCys-C
Coagulation	Feline/Canine	D-dimer
Endocrine	Feline/Canine	TT4
	Canine	cTSH
Reproductive	Canine	cProg

Shanghai Kehua Bio-engineering Co., Ltd.

Mail: International@skhb.com

Phone: +86-21-64950625

Website: www.skhb.com.cn

Address: 1189 North Qinzhou Road, 200233, Shanghai

Guangzhou Focus Biotechnology Co., Ltd

Website: https://www.focus-bio.com

Address: Room 117, No. 603 Yuangang Road, Tianhe District, Guangzhou, China

Rev.: V4 Rel.: April 30, 2026



FOCUS PEGASUS MF200
Automatic Multifunctional Veterinary Analyzer

Biochemistry | Electrolytes | Coagulation | Immunofluorescence

FOCUS PEGASUS MF200

Automatic Multifunctional Veterinary Analyzer

Integrated four-in-one

- Biochemistry | Electrolytes | Coagulation | Immunofluorescence

Stable performance

- LED light source ensures consistent results

Time-saving

- 3-10 min rapid reporting

Customizable

- Reports, species & reference ranges tailored to your needs

Intelligent monitoring

- Auto-calibration + smart temperature control + sample status & dilution volume alerts

Fully automated operation

- From centrifugation to testing — hands-free operation



Focus MF200 One-step Operation



Professional & Customizable Software

Information can be entered or changed flexibly during tests

Species can be added and stored in the system, specific reference ranges can be edited and set accordingly

Customizable Report Template

- Flexibly add or remove report modules and insert your logo.
- The PDF report is automatically generated and is printable.

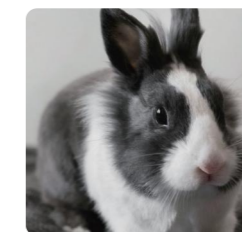
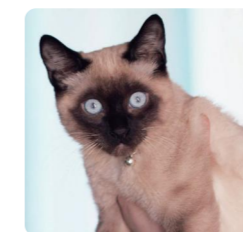
Veterinarians may need different reference range values and different tested species. MF200 software is highly customizable to support professional testing requirements.

Smart System



Test Menu

Add/Delete Species
Edit Reference Ranges



MF 200 Parameter Specification

	BIOCHEMISTRY & ELECTROLYTES	COAGULATION	IMMUNOFLUORESCENCE
Supported Reagents			
Sample	Whole blood, serum, plasma	Whole blood, plasma	Whole blood, serum, plasma, feces, ocular, nasal, and oral swabs
Detection Principle	Turbidimetry, Absorption Spectrometry	Turbidimetry, Absorption Spectrometry	Time-resolved fluoroimmunoassay
Testing Time	10min	10min	3~10min
Sample Volume Requirement	100 µL	100 µL	5~80 µL
Reagent Shelf-life	12 months	12 months	24 months
Storage and Transportation	2~8°C	2~8°C	2~30°C
Automated Centrifugation	Supported	Supported	/
Instrument Maintenance	Self-check on start-up & periodic manual check		
Size (mm)	280mm(L)×435mm(W)×460mm(H)		
Weight	17 Kg		
Language	Chinese & English, additional languages on request		
Data Port	2 USB & 1 Ethernet port (RJ-45)		
Operating Voltage	AC100~240V, 50/60Hz; 100VA		

MF 200 Test Menu

Test item Calculated Item	ALP	ALT	AMY	BUN	CK	GGT	GLU	LDH	ALB	AST	CRE	PHOS	TP	Others
	LPS	TBA	TBIL	TC	tCa	tCO ₂	TG	UA	A/G	AST/ALT	B/C	Ca×PHOS	GLOB	
6 Canine Inflammation	LPS		AMY	BUN							CRE B/C			cCRP
7 Kidney Function				BUN	tCa			UA			CRE B/C	PHOS		K ⁺
8 Kidney Function				BUN	tCa			UA			CRE B/C	PHOS Ca×PHOS		K ⁺
10 Health Check	ALP	ALT		BUN			GLU		ALB A/G		CRE B/C		TP GLOB	
11 Liver Function	ALP	ALT TBA	TBIL	TC		GGT			ALB A/G	AST			TP GLOB	
12 Liver Function	ALP	ALT TBA	TBIL	TC		GGT			ALB A/G	AST AST/ALT			TP GLOB	
12 Feline Inflammation	ALP LPS	TBA		BUN		GGT			ALB A/G		CRE B/C		TP GLOB	fSAA
13 Exotic Pets Diagnostics		TBA			tCa		GLU	UA	ALB A/G	AST		PHOS	TP GLOB	Na ⁺ , K ⁺ , Na ⁺ /K ⁺
14 Exotic Pets Diagnostics		TBA			tCa		GLU	UA	ALB A/G	AST		PHOS Ca×PHOS	TP GLOB	Na ⁺ , K ⁺ , Na ⁺ /K ⁺
16 Comprehensive Diagnostics		ALT	AMY TBIL	BUN	CK tCa		GLU TG		ALB A/G	AST	CRE B/C	PHOS	TP GLOB	
18 Comprehensive Diagnostics		ALT	AMY TBIL	BUN	CK tCa		GLU TG		ALB A/G	AST AST/ALT	CRE B/C	PHOS Ca×PHOS	TP GLOB	
24 Comprehensive Check	ALP LPS	ALT TBA	AMY TBIL	BUN TC	CK tCa	GGT tCO ₂	GLU TG	LDH UA	ALB A/G	AST	CRE B/C	PHOS	TP GLOB	
26 Comprehensive Diagnostics	ALP LPS	ALT TBA	AMY TBIL	BUN TC	CK tCa	GGT tCO ₂	GLU TG	LDH UA	ALB A/G	AST AST/ALT	CRE B/C	PHOS Ca×PHOS	TP GLOB	

Electrolytes

9 Electrolyte	pH, PHOS, tCa, tCO ₂ , Na ⁺ , K ⁺ , Cl ⁻ , Mg ²⁺ , Na ⁺ /K ⁺
15 Electrolytes	pH, PHOS, tCa, tCO ₂ , Na ⁺ , K ⁺ , Cl ⁻ , Mg ²⁺ , Na ⁺ /K ⁺ , GLU, BUN, CRE, BUN/CRE, AG, Ca×PHOS

COAGULATION

4 Coagulation	APTT, PT, FIB, TT
---------------	-------------------